

# CloudSoda Modern Data Management for the AI Era

There is no dispute that data is a company's most important asset today and critical as we enter the AI future. Historically disparate computing models and data practices, including diverse protocols, multi-vendor environments, hybrid cloud, and the emergence and importance of the edge, have left data fragmented and unavailable with little ability to extract its true value.

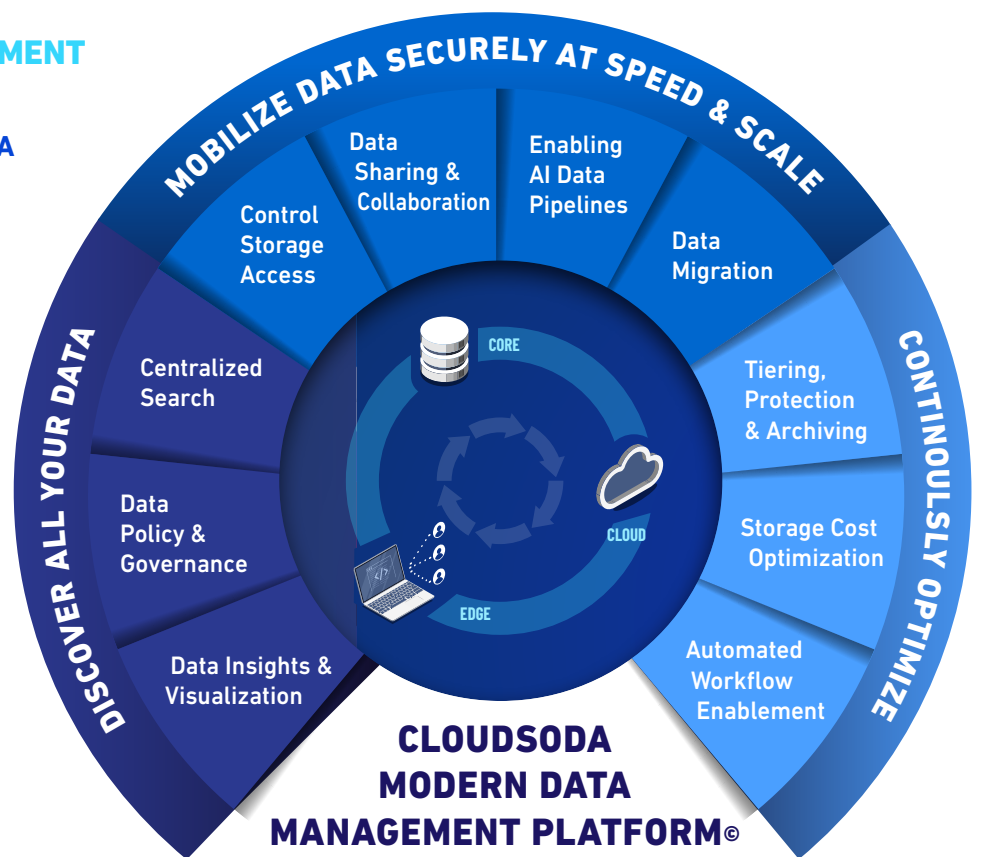
Coupled with the rampant growth of unstructured data and data formats growing at 60%+ annually, organizations are now facing data management complexities as nearly every business is looking to use their data for cost optimization, generative AI initiatives and to generate new revenue streams with LLM's, Machine Learning and Analytics.

This data deluge is overwhelming existing systems and infrastructure, leading to inefficiencies, increased cost, and data governance and security challenges.

## THE MODERN DATA MANAGEMENT FOR THE AI ERA

### UBIQUITOUS UNSTRUCTURED DATA ACCESS FOR END USERS, CLOUD, AND AI SERVICE PROVIDERS

The CloudSoda Data Management Platform leverages a universal data access plane to provide a seamless, interoperable environment for all unstructured data regardless of protocols, geographic locations, or cloud structures. It provides full data lifecycle management, enabling customers to visualize all their data in a unified view, where it's located, and what makes sense to move based on data management and cost optimization policies.



**CLOUDSODA MODERN DATA MANAGEMENT PLATFORM®**

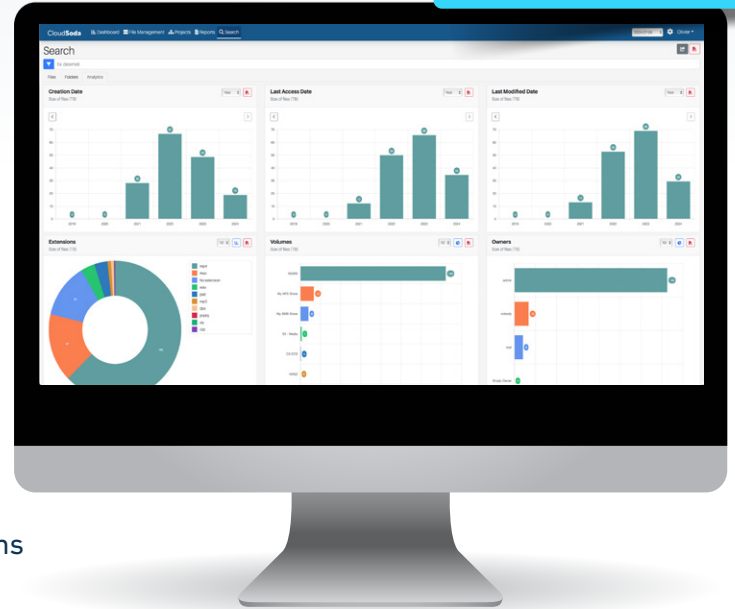
LEVERAGING CLOUDSODA UNIVERSAL DATA ACCESS PLANE

## DISCOVER ALL YOUR DATA

CloudSoda Enterprise Data Intelligence is a data management and analytics solution designed to help companies manage and analyze their storage use across on-premise storage and cloud platforms. It graphically analyzes data use, storage and costs allowing users to gain insights for cold storage optimization, data classification and governance.

The intuitive GUI is simple to use and allows non-technical users to gain immediate insights. With built-in integration with CloudSoda Enterprise Data Management and third parties via API, the solution enables workflow automation for archiving and tiering cold data.

### CLOUSSODA DATA INTELLIGENCE DASHBOARD



## FEATURES AND BENEFITS

### Data Insights and Visualization

- Visualize your data with dynamic graphs & charts
- Uncover trends, correlations, and anomalies in real-time for data-driven actions
- Identify cold data, duplicates and storage trends
- Run your analysis, generate a PDF and share with teams

### Data Policy and Governance

- Indexing enables data classification, supporting data governance strategies and automated workflows

### Centralized Search

- Fast search capabilities enable quick file location, allowing for efficient metadata searches and storage analytics. These features enable the understanding and value of unstructured data, facilitating cost reduction, archiving, internal chargebacks, and providing input for AI models.



## CLOUSSODA SECURE MOBILITY AT SPEED AND SCALE

### Anywhere to Anywhere Data Movement

- Any Storage – NAS, SAN, DAS, Object
- Any Protocol – NFS, SMB, S3, Blob, GCP
- Any Cloud –AWS, Azure, Google, B2, Wasabi...
- Any Cloud Storage Tier– Hot->Cold
- CloudSoda Controller – SaaS Offering, VM
- Agents run on – Mac, Windows, Linux

## MOBILIZE DATA SECURELY AT SPEED AND SCALE

CloudSoda's historic strengths are in data movement, workflows, and collaboration. With CloudSoda Enterprise Data Management, organizations managing complex and heterogeneous data environments can leverage the platform for continuous data lifecycle optimization.

### FEATURES AND BENEFITS

#### Data Sharing and Collaboration

- **Any-to-Any Data Movement:** CloudSoda supports a wide range of data movement sources, including on-prem file and S3 and major public clouds (AWS, Azure, GCP) and CSPs (Wasabi, Backblaze, Storj) all in native format. AI Enable data pipelines through seamless movement of data from where it's created to where its processed.

#### Predictive Analytics and Cost Modeling

- **Real-Time Pricing Data:** The platform leverages Cloud Provider price books and custom price books for any storage to provide real-time pricing data and transfer cost, enabling accurate cost comparisons and budgeting.

#### Security and Compliance

- **Data Encryption:** All data is encrypted at flight, ensuring security during migration. And Roll-based access control (RBAC) to enables multiple users to securely manage assets within a defined scope.

#### Integration and APIs

- **Seamless Integration:** CloudSoda integrates with existing workflows and supports API integration with a RESTful interface and a GraphQL, making it easy to incorporate into current systems and applications.

## CONTINUOUS DATA LIFECYCLE MANAGEMENT

### FEATURE AND BENEFITS

- **On-Demand and Policy-Based Moves for Tiering, Data Protection and Archiving:** Data can be intelligently moved on-demand or automatically across hot and cold storage tiers using CloudSoda Data Intelligence. Filters and tagging provide flexibility in managing, moving, and migrating data for optimal data placement and peak savings.
- **Identification of Old and Unused Files for Storage Cost Optimization:** Identify inactive and duplicate files to reduce redundant data and optimize storage use.
- **Insights into Data Changes over Time:** Gain detailed insights into how data changes over time, allowing users to track modifications, optimize workflows and manage data more effectively.

### EASE OF USE AND INSTALLATION

- **User-Friendly Interface:** The platform features an intuitive and easy-to-use GUI, simplifying the data management process.
- **Quick installation and ease of use** remove the cost, complexity, and surprises associated with managing data at any scale.

“

#### PLANNING & GOVERNANCE:

*“DataIntell helps us better plan our provisioning of new storage...”*

*“By understanding the impact of data on our processes, we have optimized our workflows.”*

— **PHILIPPE HAMELIN**

Director of Technology Services



With the CloudSoda Modern Data Management Platform customers benefit from a unified view of all their data enabling actionable insights for storage cost optimization and governance to address the full data lifecycle management. The powerful data-driven dashboards and charts allow for numerous cost optimization and value-creating opportunities, from cold and duplicate data detection to enabling teams to build data classifications for governance and to train AI models.

And with integrated workflows, users can automate data movement bi-directionally between hybrid and public clouds for data sharing and collaboration creating the foundation modern data management.

### CLOUSSODA MODERN DATA MANAGEMENT SOLUTION

- **VIEW:** Storage usage (SAN, NAS, DAS, Cloud)
- **SEARCH:** Sort and find your data based on intelligent insights and metadata
- **DISCOVER:** Hot and cold data
- **FIND:** Duplicate data
- **SEAMLESSLY MOVE:** Data on-prem and to / from the cloud
- **CONTINUOUSLY OPTIMIZE**



### BOOK A DEMO

Unlock the full potential of your data with CloudSoda's Modern Data Management Platform. Book a demo today to experience how CloudSoda can provide unprecedented insights and transform your data management strategy. [cloudsoda.io/book-a-demo](https://cloudsoda.io/book-a-demo)